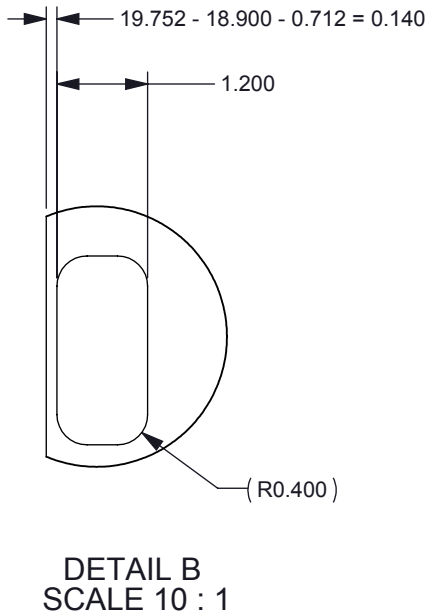
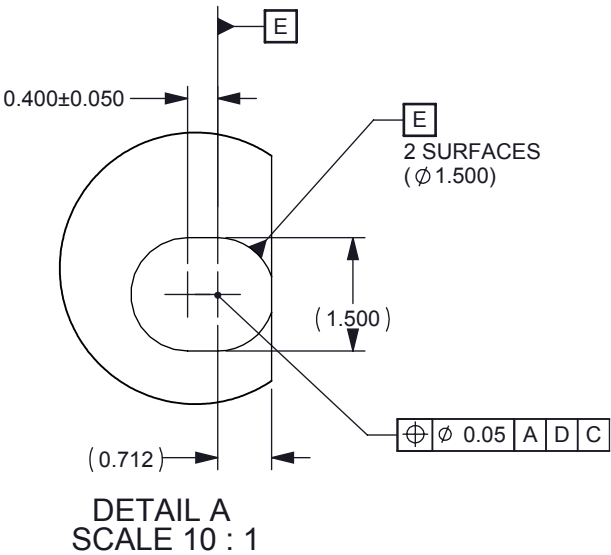
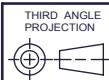


© COPYRIGHT 2013 TEXAS INSTRUMENTS  
UNPUBLISHED, ALL RIGHTS RESERVED

DWG NO 2513419		SHEET 1	1
REVISIONS			
REV	DESCRIPTION	DATE	BY
A	ECO #2136196 - INITIAL RELEASE	9/20/13	RDR
B	CLEARIFIED TAPPED HOLE CALLOUTS	10/8/13	RDR



NOTES: UNLESS OTHERWISE SPECIFIED:  
1. MATERIAL: 6061-T6 ALUMINUM  
2. LIGHT BEADBLAST SURFACES SHOWN.  
(MATTE FINISH)  
3. FINISH: ANOPLATE ANOBLACK EC PROCESS.  
ALTERNATE BLACK ANODIZING PROCESSES  
NOT CONSIDERED AN EQUIVALENT




NEXT ASSY	USED ON
APPLICATION	

UNLESS OTHERWISE SPECIFIED

- DIMENSIONS ARE IN MILLIMETERS
- TOLERANCES: ANGLES ±1°  
2 PLACE DECIMALS ±0.25  
1 PLACE DECIMALS ±0.50
- DIMENSIONAL LIMITS APPLY BEFORE PROCESSES
- INTERPRET DIMENSIONS IN ACCORDANCE WITH  
ASME Y14.5M-1994
- REMOVE ALL BURRS AND SHARP EDGES
- PARENTHETICAL INFO FOR REF ONLY

DWN R ROWE	DATE 9/5/2013
Engr	
CQE/QA	
CM	
Apprvd	

 TEXAS INSTRUMENTS	
BRACKET, INTERFACE, S241 DMD	
SIZE B	DWG NO 2513419
SCALE 5:1	REV B
SHEET 1 OF 2	

D

C

B

A

D

C

B

A

